

# CBD DROPS OLIVE OIL

## 3-15%



Ingredients: CANNABIS SATIVA BIOMASS EXTRACT, CAPRYLIC/CAPRIC TRI-GLYCERIDE, OLEA EUROPAEA FRUIT OIL



OLIVE OIL  
*Olea europaea*



HEMP EXTRACT  
*Cannabis sativa* L.

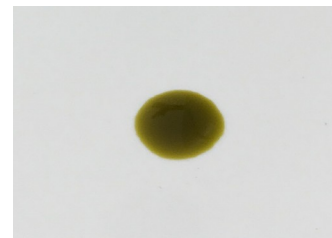
# CERTIFICATE OF ANALYSIS No.: 2022-8138

## CLIENT

Pharmahemp d.o.o., Cesta v Gorice 8  
1000 Ljubljana, Slovenija

## SAMPLE \*

CBD DROPS 3% - olive oil



Sample condition: SUITABLE  
Sample ID: 2211031  
Sample type: Viscous liquid  
Batch No.: \* DR03022069A

Work order: 2022-106300  
Analysis ID: 2022\_059  
Method ID: PHL\_RPC\_12C  
Method SOP: MET-002-03

Sample received: 14/03/2022  
Start of analysis: 14/03/2022  
End of analysis: 15/03/2022  
Analyst: Janez Gerdenc

\* Information provided by the client.

CANNABINOID PROFILE	Concentration [% w/w]	Expanded uncertainty [% w/w]	Graphic presentation of relative cannabinoid concentration
<b>CBDV</b> - Cannabidivarin	0.050	0.011	
<b>CBDA</b> - Cannabidiolic acid	1.741	0.087	
<b>CBGA</b> - Cannabigerolic acid	0.039	0.012	
<b>CBG</b> - Cannabigerol	0.046	0.014	
<b>CBD</b> - Cannabidiol	1.385	0.069	
<b>THCV</b> - Tetrahydrocannabivarin	< LOQ	n/a	
<b>CBN</b> - Cannabinol	< LOQ	n/a	
<b>CBC</b> - Cannabichromene	0.0442	0.0097	
<b>THC</b> - Δ-9-Tetrahydrocannabinol	0.066	0.015	
<b>THCA</b> - Δ-9-Tetrahydrocannabinolic acid	0.0315	0.0069	
<b>8-THC</b> - Δ-8-Tetrahydrocannabinol	< LOQ #	n/a	
<b>CBL</b> - Cannabicyclol	< LOQ #	n/a	

Units and abbreviations: % w/w = weight percent, < LOQ = below the limit of quantitation (0.03 % w/w), ND = not detected, n/a = not available.

The results given herein apply only to the sample as received. **Expanded Uncertainty** was calculated using coverage factor  $k = 2$ , corresponding to a double standard uncertainty and characterizes the interval value in which it is possible to expect the real value with a probability of 95%. This is stated according to the ISO/IEC Guide 98-3.

Total or partial reproduction of this document is not allowed without the permit from PharmaHemp d.o.o. The document does not substitute any other legal document.

Date issued:

15/03/2022

Approved by:

mag. Marko Dragan  
Analytical Laboratory Manager

Authorized by:

dr. Boštjan Jančar  
Chief Technology Officer

End of Certificate

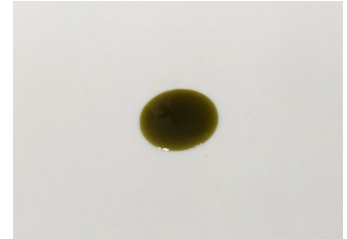
# CERTIFICATE OF ANALYSIS No.: 2022-9083

## CLIENT

Pharmahemp d.o.o., Cesta v Gorice 8  
1000 Ljubljana, Slovenija

## SAMPLE \*

CBD DROPS 5% - olive oil



Sample condition: SUITABLE  
Sample ID: 2221072  
Sample type: Viscous liquid  
Batch No.: \* DR05022146A

Work order: 2022-106569  
Analysis ID: 2022\_120  
Method ID: PHL\_RPC\_12C  
Method SOP: MET-LAB-003-02

Sample received: 26/05/2022  
Start of analysis: 26/05/2022  
End of analysis: 27/05/2022  
Analyst: Karmen Korbar

\* Information provided by the client.

CANNABINOID PROFILE	Concentration [% w/w]	Expanded uncertainty [% w/w]	Graphic presentation of relative cannabinoid concentration
<b>CBDV</b> - Cannabidivarin	0.354	0.064	
<b>CBDA</b> - Cannabidiolic acid	1.885	0.094	
<b>CBGA</b> - Cannabigerolic acid	0.041	0.012	
<b>CBG</b> - Cannabigerol	0.054	0.016	
<b>CBD</b> - Cannabidiol	3.24	0.16	
<b>THCV</b> - Tetrahydrocannabivarin	0.112	0.018	
<b>CBN</b> - Cannabinol	< LOQ	n/a	
<b>Δ<sup>9</sup>-THC</b> - Δ-9-Tetrahydrocannabinol	0.054	0.012	
<b>Δ<sup>8</sup>-THC</b> - Δ-8-Tetrahydrocannabinol	< LOQ	n/a	
<b>CBL</b> - Cannabicyclol	< LOQ	n/a	
<b>CBC</b> - Cannabichromene	0.0384	0.0085	
<b>Δ<sup>9</sup>-THCA</b> - Δ-9-Tetrahydrocannabinolic acid	0.0370	0.0081	
<b>CBE</b> - Cannabielsoin	< LOQ #	n/a	
<b>CBNV</b> - Cannabivarin	< LOQ #	n/a	
<b>CBCA</b> - Cannabichromenic acid	0.062 #	0.014	
<b>CBT</b> - Cannabicitran	< LOQ #	n/a	

Units and abbreviations: % w/w = weight percent, < LOQ = below the limit of quantitation (0.03 % w/w), ND = not detected, n/a = not available.

The results given herein apply only to the sample as received. Expanded Uncertainty was calculated using coverage factor k = 2, corresponding to a double standard uncertainty and characterizes the interval value in which it is possible to expect the real value with a probability of 95%. This is stated according to the ISO/IEC Guide 98-3.

Total or partial reproduction of this document is not allowed without the permit from PharmaHemp d.o.o. The document does not substitute any other legal document.

Date issued:

27/05/2022

Approved by:

mag. Marko Dragan  
Analytical Laboratory Manager

Authorized by:

dr. Boštjan Jančar  
Chief Technology Officer

End of Certificate

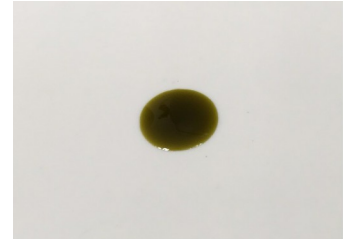
# CERTIFICATE OF ANALYSIS No.: 2022-9084

## CLIENT

Pharmahemp d.o.o., Cesta v Gorice 8  
1000 Ljubljana, Slovenija

## SAMPLE \*

CBD DROPS 10% - olive oil



Sample condition: SUITABLE  
Sample ID: 2221074  
Sample type: Viscous liquid  
Batch No.: \* DR10022146A

Work order: 2022-106569  
Analysis ID: 2022\_120  
Method ID: PHL\_RPC\_12C  
Method SOP: MET-LAB-003-02

Sample received: 26/05/2022  
Start of analysis: 26/05/2022  
End of analysis: 27/05/2022  
Analyst: Karmen Korbar

\* Information provided by the client.

CANNABINOID PROFILE		Concentration [% w/w]	Expanded uncertainty [% w/w]	Graphic presentation of relative cannabinoid concentration
<b>CBDV</b>	- Cannabidivarin	1.073	0.054	
<b>CBDA</b>	- Cannabidiolic acid	1.799	0.090	
<b>CBGA</b>	- Cannabigerolic acid	0.038	0.011	
<b>CBG</b>	- Cannabigerol	0.151	0.038	
<b>CBD</b>	- Cannabidiol	8.32	0.42	
<b>THCV</b>	- Tetrahydrocannabivarin	0.350	0.056	
<b>CBN</b>	- Cannabinol	< LOQ	n/a	
<b>Δ<sup>9</sup>-THC</b>	- Δ-9-Tetrahydrocannabinol	0.053	0.012	
<b>Δ<sup>8</sup>-THC</b>	- Δ-8-Tetrahydrocannabinol	< LOQ	n/a	
<b>CBL</b>	- Cannabicyclol	< LOQ	n/a	
<b>CBC</b>	- Cannabichromene	0.0353	0.0078	
<b>Δ<sup>9</sup>-THCA</b>	- Δ-9-Tetrahydrocannabinolic acid	0.0341	0.0075	
<b>CBE</b>	- Cannabielsoin	0.057 #	0.016	
<b>CBNV</b>	- Cannabivarin	0.0422 #	0.0093	
<b>CBCA</b>	- Cannabichromenic acid	0.058 #	0.013	
<b>CBT</b>	- Cannabicitran	< LOQ #	n/a	

Units and abbreviations: % w/w = weight percent, < LOQ = below the limit of quantitation (0.03 % w/w), ND = not detected, n/a = not available.

The results given herein apply only to the sample as received. Expanded Uncertainty was calculated using coverage factor k = 2, corresponding to a double standard uncertainty and characterizes the interval value in which it is possible to expect the real value with a probability of 95%. This is stated according to the ISO/IEC Guide 98-3.

Total or partial reproduction of this document is not allowed without the permit from PharmaHemp d.o.o. The document does not substitute any other legal document.

Date issued:

27/05/2022

Approved by:

mag. Marko Dragan  
Analytical Laboratory Manager

Authorized by:

dr. Boštjan Jančar  
Chief Technology Officer

End of Certificate

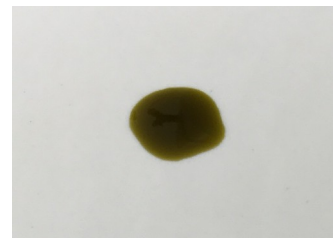
# CERTIFICATE OF ANALYSIS No.: 2022-8135

## CLIENT

Pharmahemp d.o.o., Cesta v Gorice 8  
1000 Ljubljana, Slovenija

## SAMPLE \*

CBD DROPS 15%- olive oil



Sample condition: SUITABLE  
Sample ID: 2211028  
Sample type: Viscous liquid  
Batch No.: \* DR15022070A

Work order: 2022-106300  
Analysis ID: 2022\_059  
Method ID: PHL\_RPC\_12C  
Method SOP: MET-002-03

Sample received: 14/03/2022  
Start of analysis: 14/03/2022  
End of analysis: 15/03/2022  
Analyst: Janez Gerdenc

\* Information provided by the client.

CANNABINOID PROFILE	Concentration [% w/w]	Expanded uncertainty [% w/w]	Graphic presentation of relative cannabinoid concentration
<b>CBDV</b> - Cannabidivarin	1.704	0.085	
<b>CBDA</b> - Cannabidiolic acid	1.568	0.078	
<b>CBGA</b> - Cannabigerolic acid	0.043	0.013	
<b>CBG</b> - Cannabigerol	0.286	0.072	
<b>CBD</b> - Cannabidiol	13.48	0.67	
<b>THCV</b> - Tetrahydrocannabivarin	0.616	0.074	
<b>CBN</b> - Cannabinol	< LOQ	n/a	
<b>CBC</b> - Cannabichromene	0.0374	0.0082	
<b>THC</b> - Δ-9-Tetrahydrocannabinol	0.110	0.019	
<b>THCA</b> - Δ-9-Tetrahydrocannabinolic acid	< LOQ	n/a	
<b>8-THC</b> - Δ-8-Tetrahydrocannabinol	< LOQ #	n/a	
<b>CBL</b> - Cannabicyclol	< LOQ #	n/a	

Units and abbreviations: % w/w = weight percent, < LOQ = below the limit of quantitation (0.03 % w/w), ND = not detected, n/a = not available.

The results given herein apply only to the sample as received. **Expanded Uncertainty** was calculated using coverage factor  $k = 2$ , corresponding to a double standard uncertainty and characterizes the interval value in which it is possible to expect the real value with a probability of 95%. This is stated according to the ISO/IEC Guide 98-3.

Total or partial reproduction of this document is not allowed without the permit from PharmaHemp d.o.o. The document does not substitute any other legal document.

Date issued:

15/03/2022

Approved by:

mag. Marko Dragan  
Analytical Laboratory Manager

Authorized by:

dr. Boštjan Jančar  
Chief Technology Officer

End of Certificate